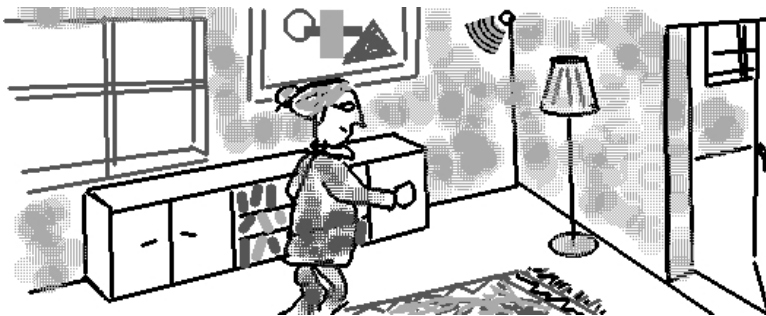


### Context

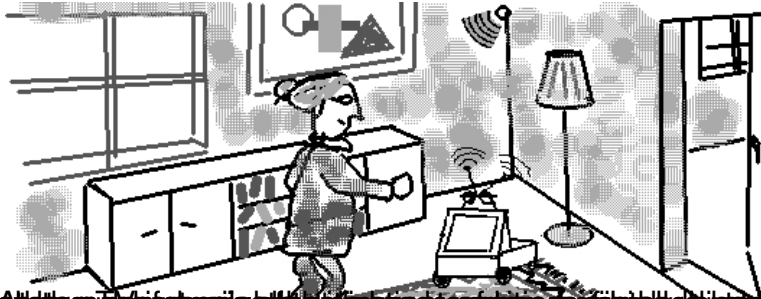
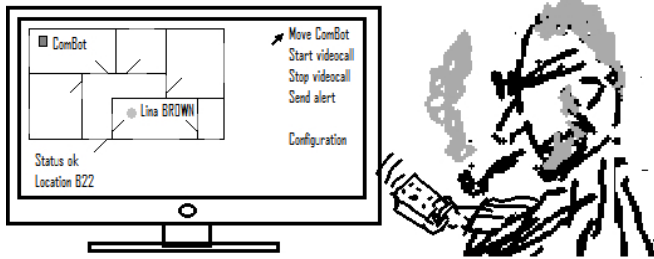
This use case illustrates some future assistance services for elderly persons, [search](#) supported by indoor localization technologies and context-aware applications. The indicated features and services are at the core of Ambient Assisted Living in general, [order](#)

and will therefore, after following a user-centered design approach, serve as source of generic and AAL-specific requirements for the Future Internet. Private and public spaces like home and supermarkets will serve as AAL platforms and can thus provide added value services. The use case highlights the commonalities between the different spaces and the seamless service provision expected from the Future Internet based society when moving from one AAL space to another.

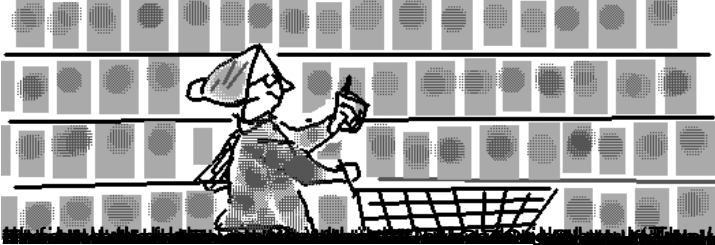
### Scenario



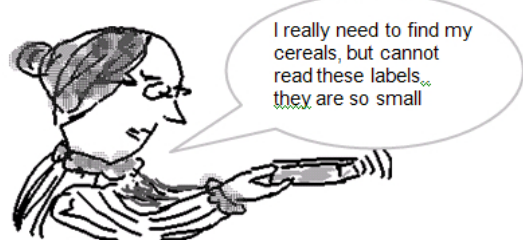
Lina is a 78-year old person, who lives alone but she has adult children who care about her. While living away from Lina, the children are always aware of her whereabouts and they are confident that the AAL system installed at her home would alert them in time in case of problems.



Although the robot is not yet fully autonomous, it can be controlled via a remote control or a mobile phone. The robot can also be used to deliver items to the user.



Shopping with a robot. The robot can be used to deliver items to the user.



Shopping with a robot. The robot can be used to deliver items to the user.



Shopping with a robot. The robot can be used to deliver items to the user.